

Agenda Item 6e. Early Years Collaborative

1.0 SUMMARY

- 1.1 This report provides an update on the progress of the Early Years Collaborative (EYC) in Argyll and Bute and outlines a number of new developments for the CPP Management Committee to consider.

2.0 RECOMMENDATIONS

It is recommended that the CPP Management Committee::

- 2.1 note the current actions including the implementation of the Leadership Walk Rounds which commenced in April 2014.

3.0 DETAILS

- 3.1 The Early Years Collaborative is the world's first national multi-agency quality improvement programme focussing on developing positive starts and addressing inequalities for children. The programme is directed at the national aim for Scotland to be the best place in the world for a child to grow up and the EYC is taken forward in each area by the Community Planning Partnership.
- 3.2 The EYC seeks to meet a series of national stretch aims linked to positive pregnancies, and children reaching developmental milestones at various stages from birth through to age 8 years. The EYC encourages a wide range of pilot tests of change to be developed throughout the partnership which, if successful, can be scaled up for implementation.
- 3.3 The Argyll and Bute CPP are laying strong foundations in their early years improvement work. The objective of the EYC is to deliver tangible improvements in outcomes and reduce inequalities for vulnerable children, shifting the balance of public services towards early intervention and prevention. The CPP has embarked on improvement interventions to address issues identified nationally – these are featured in the agreed driver diagrams to meet local need. The key change themes have been reviewed to ensure our partnership has the biggest impact on the aims of the EYC and the following broad themes/ key changes have emerged:

- Early support for pregnancy and beyond
- Attachment and child development
- Transitions of care
- The 27-30 month review
- Family Engagement
- Addressing child poverty-Income maximisation
- Developing Parenting Skills

3.4 Following the national methodology, across the Partnership the EYC is conducting small tests to identify where a change can result in an improvement, analysing the impact/ evidence and where the evidence shows positive outcomes imbed the change across the service. Examples include:

- Helensburgh – a test on improving early literacy/attachment through the Big Bedtime Read.
- Oban - testing family asset building through an intergenerational project.
- Kintyre - testing the use of the Family Pathway during transitions.
- Dunoon - testing improved family engagement with hard to reach families.
- Bute – Nursery nurse employed with a housing provider to help income maximisation.

3.5 Launch of Public Social Partnership St Joseph’s Primary School Family Centre

3.5.1 The Public Social Partnership was launched on 12th May 2014 to support families in Helensburgh and Lomond with children from birth to age five including unborn children.

3.5.2 The new service aims to build families skills and confidence to ensure they are better able to deal with issues impacting on the wellbeing of their children. The service will also help families to use local community facilities and services more effectively. Practitioners will work with families at home, individually and in groups to help children achieve their potential. The service will focus particularly on engaging hard to reach families not currently engaging with services to help them identify the goals they wish to achieve through initial assessment. In order to meet these goals intensive support will be provided in the home including;

- Joint child/parent play sessions
- Support with routines, such as meals and bedtimes
- Practical help with home making activities, cooking and child safety
- Support to attend immunisations and dental appointments

- Support for parents to cope and feel more confident
- Help with accessing other supports including maximising income through benefits.

3.5.3 As the families reach their goals, the support will become less intensive, helping both families and communities to build assets. Funding is available to expand the PSP work next in the Oban area. The Oban, Lorn and the Isles Executive Group are preparing a proposal for consideration by the PSP Governance Group.

3.6 Launch of the Kintyre Family Pathway

3.6.1 The Argyll and Bute Family Pathway Pilot was launched in Kintyre on 25th April to create coherence in support for children and their families from pre-birth to school entry. The Family Pathway aims to develop consistency with transitions between named persons: Midwife –Health Visitor-Head Teacher. This will ensure the well-being of children and families is maintained and improved using the shared language of GIRFEC and the well- being indicators using an asset based approach with parents rather than identifying deficits. Testing will focus on the use of the well-being indicator tools at each stage along the pathway.

3.6.2 Data will be collected and analysed on all new births from 1st May to 30th September.

Data Measurements:

- Increase in the number of families engaged with the Family Pathway
- Impact of the Family Pathway on early identification of need
- Ease of use of the Pathway
- Qualitative dialogue arising from focus groups from each work stream stage involving parents /carers and practitioners.

3.6.3 The pilot project will run in the Campbeltown area as a population segmentation area to “test “ the Pathway working with midwives, health visitors and nursery staff. Fortnightly then monthly supervision meetings will take place with the three leads for the project. Data will be evaluated at the end of September (6 month period) to discuss the impact and plan the next steps.

3.7 Leadership Walk Rounds

3.7.1 The purpose of the Leadership Walk Rounds is to primarily champion the aims of the Collaborative by undertaking visits to centres currently testing small measurable changes which if successful in improving outcomes on a small scale can be rolled out more widely to achieve a broader impact.

There have been six visits to sites by members of the Leadership Group between 25th April and 1st July

- 3.7.2 The Leadership Calendar has been updated with proposed dates to visit the new Tests of Change sites from August 2014 onwards.

3.8 Psychology of Parenting Implementation Plan

- 3.8.1 This is an ambitious initiative targeting parents/carers of children with elevated levels of behavioural difficulties by training 16 practitioners to deliver parenting programmes across the authority with the following aims:

- To improve outcomes for children with significant levels of early-onset disruptive behaviour problems
- To increase workforce capacity around evidence-based parenting interventions for such children and their families
- To assist services shift towards preventive early years spending
- To promote effective early years partnership working

3.8.2 Next Steps

Funding has been agreed by Scottish Government through NHS Education for Scotland (NES). We have agreed with NES a Psychology of Parenting Programme (PoPP) Governance Structure and an EYC PoPP Steering Group has been established which will oversee the delivery of the implementation plan.

The Argyll and Bute Partnership has appointed a PoPP Co-ordinator who is assisting with the roll out of the training for practitioners and the engagement of targeted parents. The targets have been identified by NES. The culmination of planning, rigorous training and the enthusiasm of practitioners will ensure these programmes will make a sustainable difference in improving longer term outcomes for parents/carers and children.

3.9 Summary of PDSA Cycles

- 3.9.1 We are currently carrying out a range of tests of change known as PDSA's (Plan/Do/Study/Act) to meet the stretch aims of the Early Years Collaborative workstreams.

PDSA is the short hand used to describe a process of quality improvement. It provides a framework to make changes and measure the impact of those changes.

- 3.9.2 The new Project Charter Portfolio was uploaded on to a Share Point ICT system on 30th May and includes hyperlinks to all of the project charters plus supporting data and email links to all the practitioners involved in the tests.

The EY folder on sharepoint may be accessed through the following link:

[EYC Sharepoint Folder](#)

The project portfolio on Sharepoint may be accessed through the following link:

[EYC Project Portfolio](#)

3.10 Research Project Children 1st EYC Funding

- 3.10.1 Children 1st are undertaking a research project to identify the key local agencies in Cowal who could contribute to early identification of a “just coping” family in order to agree an integrated package of support services based on family need. A range of mapping information, sharing of good practice and effective tools in improving outcomes for children and their families is being gathered to assist with a core data set on just coping children and families to ease requests for assistance and transitions cross services. The draft report will be available in August/ September 2014.

3.11 Nursery Nurse Fyne Homes Bute (EYC Funding)

- 3.11.1 A Service Level Agreement has been prepared for the provision of a pioneer project involving the employment of a Nursery Nurse to support the objectives of the EYC and to accelerate the conversion of the high level principles set out in GIRFEC and the Early Years Framework into practical actions to support vulnerable just coping families on Bute. The nursery nurse will also support parents to achieve identified goals in respect of their children and promote income maximisation.

3.12 Annual Conference

- 3.12.1 The Annual EYC Conference will take place on Tuesday 9th September the Guest Speaker will be Dr Suzanne Zeedyk and the topic is Child Attachment.

A recent NHS study revealed 40% of children do not have a secure attachment with parents/ carers. Responsive and sensitive parenting leads to better attachment and will influence how a child feels about themselves and how they relate to the outside world. The conference will be open to managers and practitioners across the CPP to help support enhanced attachment.

4.0 CONCLUSIONS

- 4.1 Across Argyll and Bute CPP the key change themes are being developed into packages of interventions for optimal adoption across the EYC in complete alignment with the Early Years Taskforce Framework expectations and the Single Outcome Agreement.

5.0 IMPLICATIONS

Policy – None

Financial – None

Legal – None

HR – None

Equalities – None

Risk – Failure to meet the Council's stretch aims could have implications for the Council's reputation.

Customer Service – will help deliver positive outcomes for children and young people.

For further information please contact:

Liz Strang

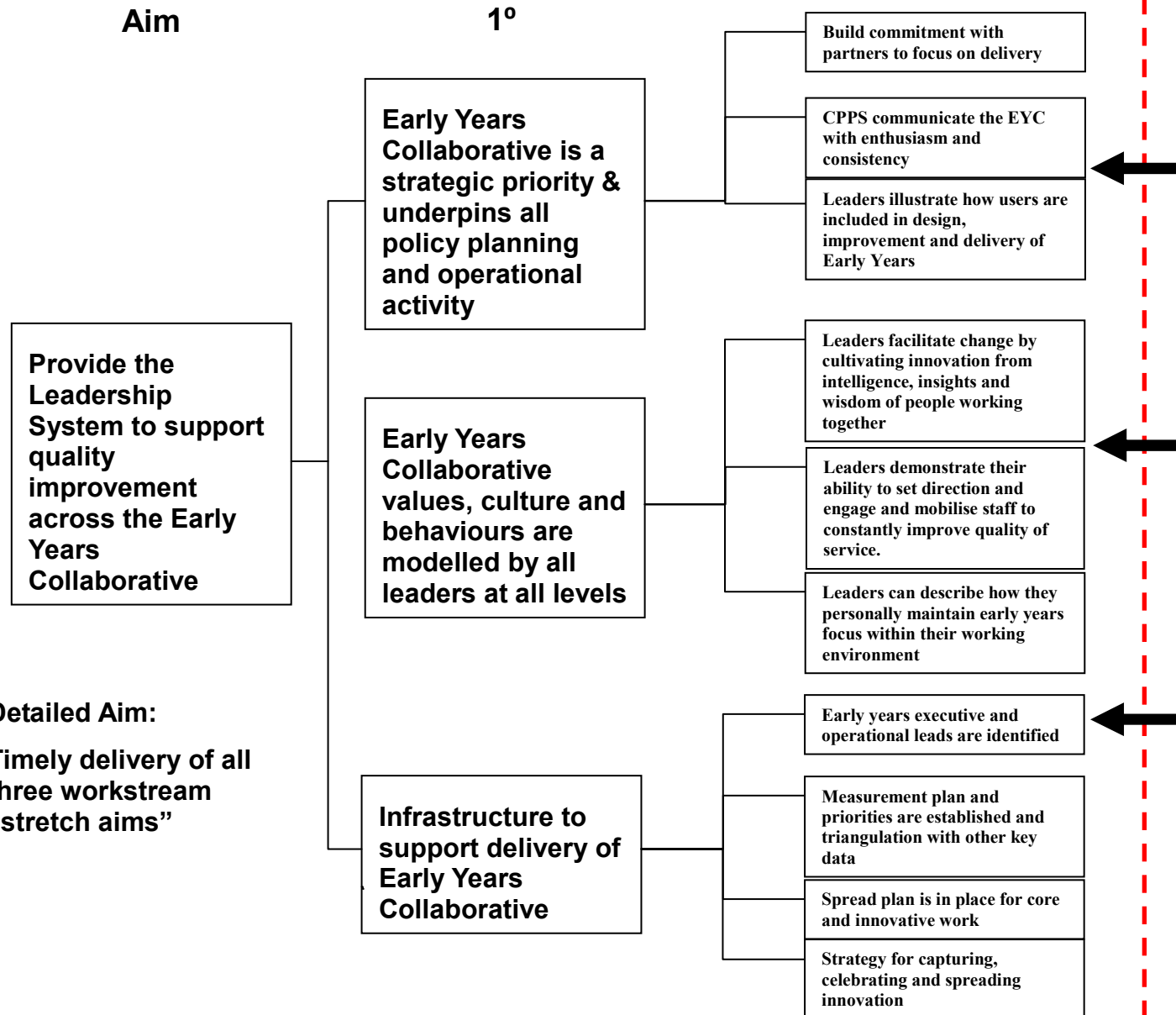
Early Years Programme Manager

01546 604281

Appendix 1 – Leadership Driver Diagram

Argyll and Bute Leadership Driver Diagram

Theory of what drives leadership support



Argyll and Bute Actions

1. Agree EYC priorities and approach to service development.
2. Agree approach to building on community assets – MAKI research pilot.
3. Ensure early years & improvement on agendas of senior management/ partnership meeting.
4. Good operational decision making.
5. Engage practitioners directly involved in children & family services (incl. testing).
6. ‘Sense check’ proposed improvements against Early Years Framework & ICSP.
7. Agree leadership qualities & how to demonstrate these.
8. Agree approach to workforce skills & development (enabling competent & confident staff who demonstrate culture of EY values and improvement).
9. Enable adequate and appropriate resources.
10. Agree approach which ensures practitioners know what is expected and understand performance locally.
11. Take part in walk-rounds and ensure feedback.
12. Monitor progress and remove barriers (e.g. assist in decision making/ escalating).
13. Develop and maintain measurement system.

Detailed Aim:
Timely delivery of all three workstream “stretch aims”